



Hook, Line, and Sinker

June
2014
Volume 27
Issue 6

The Official Publication of The New Ulm Area Sport Fishermen

New Ulm Area Sport Fishermen • P.O. Box 294 • New Ulm, MN 56073 Web Site: newulmsportfish.org

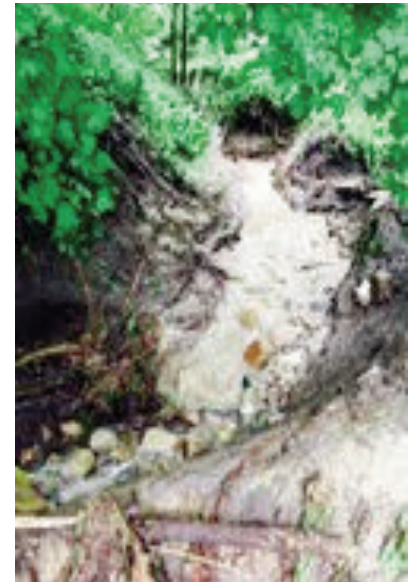
Pitch count for Walleyes

Over the past few years, pitching or casting to reach shallow walleyes has increased in popularity amongst walleye anglers tenfold. Some fisheries like North Dakota's Devils Lake have long had a casting cult but pitching or casting is no longer as regional or confined to a specific body of water. Especially when walleyes are relating to shallow structure, you can do a lot of damage by casting to the fish. When we look at effectively fishing less than ten feet of water, there are several ways to skin a cat. Drifting and trolling these locations are options. Often however early in the season, fish seem to bump away from the boat more. Might have to do with clear water often associated with cool water temperatures before algae blooms can stain the water, maybe the metabolism of the fish has something to do with this phenomena. Whatever the reason, it can be tough to drive right over the top of fish early in the season and casting allows you to focus on a specific area with some precision. While casting or pitching can be very precise and even methodical where you can plant on a specific location, you can also cover water. The best of both worlds for shallow walleyes. Regardless however whether you are fishing blade baits, jigs, swim baits or crank baits on either moving water or still, there are some nuances that can definitely elevate your pitching game. Like many facets of fishing, speed and mojo is everything. As a guide, I often liked to have everybody in the boat using identical rods, reels and line so that any successful recipe was easier to repeat within the boat. If you and a partner spend a lot of time fishing

together, use identical gear. Reason being, when he or she catches three fish in a row, you can watch their reel speed and match up identically. If they are using a completely different reel with different gear ration and spool, you might be reeling much slower for example but still moving faster in the water. Matching up is much more difficult with different equipment so keep some consistency within the boat. Early in the season, slow methodical retrieves often shine and what often happens after catching a few fish is that inadvertently, we begin to reel faster because of excitement. Force yourself to be conscience of how fast or slow you are fishing and make mental notes so that you can tone back or pick up the tempo with some consistency to match up what is working. As important as reel speed can be when pitching or casting, there is a whole host of other variables like snaps, pauses, lifts and swings that can make a crankbait, jig, soft plastic or blade bait come to life. These subtleties can only be dialed in on the water with experimentation. What often goes unsaid however and can be as or more important is angle of the cast... how you approach a shallow location and work a lure across the location. Some anglers preach keeping the boat deep and casting in shallower but throwing perpendicular to the shoreline from deep to shallow is just one angle to present a bait. The advantage of this approach is that you cover different depths. If fish however are holding tight to a specific feature like a lip or cut along

Continued on page 2

Flood damage around the club house



Club Calendar

June 26th	NUASF Club Meeting
July 17th	NUASF Social Night at Club House
July 30th	NUASF Club Meeting
Aug 15th	NUASF Social Night at Club House
Aug 14th	Kids Fishing Contest at Riverside Park 4-8
Aug 28th	NUASF Club Meeting
Sep 1st	Labor day (Give Boat Away)
Sep 11th	NUASF Social Night at Club House
Sep 13th	Peterman's Fall Fishing Contest
Sep 25th	NUASF Club Meeting



FARM & FLEET

FARM • HARDWARE • AUTO • TOOLS
LAWN & GARDEN • PAINT • CLOTHING
2107 North Garden, New Ulm 359-2988



Merrill Lynch Wealth Management

Bank of America Corporation

Neal Haaland 514 Broadway N Fl 1
Vice President Fargo, ND 58102
Senior Financial Advisor neal_haaland@ml.com
Tel. 701.241.1253
866.241.0885
Fax 701.205.4274
Merrill Lynch, Pierce, Fenner & Smith Incorporated

Hoffman Construction

*Gravel – Excavation –
Dozer Work*

2231 South Broadway • New Ulm
507-359-4444

Dont's Doors

Don Thompson
507-271-1798

dont@newulm.net

Specializing in installation and service
of all residential and light commercial
overhead doors and openers.

ORV RANNO

FLOOR CARE SERVICES

2201 North Broadway, Lot141
New Ulm MN • Phone 507-3545402

KRAL'S APPLIANCE REPAIR

Commercial and Residential Appliances
Refrigeration and Cooling

Jesse Kral Cell 507-276-6797
622 North Jefferson Fax 507-354-7544
New Ulm, MN Res. 507-354-7864

Imperial Porta-Palace

Portable restrooms for job sites, festivals, parks,
street dances, cabins or anywhere a restroom is
needed. We also offer hand wash stations with
fresh water, soap and paper towels.

The cleanest restrooms in the business.

Chuck and Lynda
Courtland, MN 56021
Office 800-289-6428

Licensed, bonded and insured. MPCA LIC. #2535

From the President

By Jason Kuester

Summer has finally arrived! Now is a great time to take advantage of the local lakes and rivers in our area. We have some of the best fishing within 30 minutes of New Ulm. Take some time to fish the Minnesota River, Clear Lake, Hanska, Washington, Jefferson, Madison, Lake Crystal, Loon, High Island, Marion, and Sleepy Eye just to name a few. Most of the lakes in our area are about a month behind and the fishing has just turned on. When you are out fishing with your wife and kids or a friend, take a few pictures of your catch. We are looking at updating the pictures at the club and always need great pictures for the newsletter. Always remember to practice safety and be courteous to other fisherman. If you don't have a boat the club has 2 great fishing boats parked at Ron Ludewig's shed, your club key will unlock them. Ron's shed is located behind New Ulm Glass on Front Street. The boats are first come first serve, all we ask is that you leave some money for gas with Ron, and you clean them up when you're done.

With all of the rain the road washed out at the club. We had water in the club house, all of the tile inlets were plugged, and mud was washed up 8" on the door. We took out some heavy equipment to rebuild the driveway and roads. We still have some work left on the stream and the road edges but over all we can have the meeting. Please drive in slow and don't park close to the stream!

Pork chops will be available for your enjoyment at the next meeting. The meal will be served before the meeting at 6:30pm. Please Thank Elmer Epke for providing the pork chops and grilling them for us on his big grill. If you are able to help Elmer with setup and grilling please be at the club around 5:30pm. Please bring a dish to pass.

Summer is here and what a great time to bring our friends and family to the New Ulm Area Sport Fisherman Club. We are always looking for new members to join. If you know of someone bring them along and show them how much fun we have at our club. As always, bring a friend and each of you will receive a free refreshment of your choice!

Hope to see you at the next meeting!!

Pitch count for Walleyes from page 1

the profile of the shoreline or reef however, there are often better angles. One such angle is where you slide the front of the boat into the same depth as to where the fish are holding and instead of casting across the break from deep to shallow, casting along the break so that your bait follows the break. Essentially casting up ahead of the boat where the lure or bait works the same depth for the entire cast along a contour. What I have found is that regardless of where you fish and where, the angle you approach a spot and the distance of your casts are as important of variables as speed, color, lure, weight or what you do with the rod tip. When fish are tight to shallow structure and hugging the bottoms of lips and dips, a lure has to get to the fish and give them a chance to respond. When fish are aggressive and positioned off the bottom and willing to follow or chase a lure, you can just get close so that situation is much more forgiving. Also, on days where the fish are cruising off the bottom and looking for something to eat, you can make a short cast at just about any angle near the fish and get bit. As conditions do get tougher, walleyes in particular will often follow a bait or lure a considerable distance at times before finally biting. If you are getting bumped right at the boat repeatedly, that is what is happening. In this situation, longer casts often get bit and one of my favorite tactics is to back off the spot and keep the boat over deeper water and try and pull the fish over the deeper water with a longer cast. Long casts just give following fish that many more chances to nip before you just run out of room at the end of a retrieve. There is usually a specific angle that when matched with a specific lure works because of efficiency... staying in front of the fish. This spring, move past the traditional logic of holding the boat deep and simply firing the bait up towards shallower water. There is much more to experiment with that can make you much more effective when pitching shallow water walleyes.

Page 2



426 North Minnesota Street
New Ulm, MN 56073
507-354-4164



Hook, Line, and Sinker

The *Hook Line and Sinker* is published monthly by Joyce Reese graphic design for the New Ulm Area Sport Fishermen. The opinions expressed in this newsletter are solely those of respective writers and not to be construed as the opinion of the NUASF or its members. Send all correspondence and submissions to New Ulm Area Sport Fishermen, P.O. Box 294, New Ulm, MN 56073.

The NUASF Board

President - Jason Kuester (381-2041); Vice-President - Gary Sprenger (359-9358); Secretary - Ross Nelson (507-766-0765) Treasurer - Tony Miller (354-2457); Board Members: Ron Ludewig (507-276-6093), Mike Buechner (354-2739 s), Ken Sutherland (507-276-1534).

Monthly Meeting May 29th, 2014 Members present: 30 I. Secretary Report

I. Secretary Report

A) Motion made by Scott Sparlin and seconded by Jim Liebl to except report as read.
Passed unanimously.

II. Treasury Report

A) Balance

1) Motion made by Scott Sparlin and seconded by Jim Lieble to except report as read.
Passed unanimously.

III. Old Business

A) Membership update.

1) Membership stands at 186 – 36 Due. Membership drive: Ron Schnobrich 2 new members

B) Area Lakes and Rivers Report.

- 1) Bow String & Round Lake not worth a damn
 - 2) Ten Mile Lake –Great
 - 3) Mt Lake – Catching some crappies
 - 4) Clear Lake – Nothing to report
 - 5) MN River – 25#/30# Flathead and some channel cats
 - 6) Boundary Water – Big Northern(42”) and some small walleye
- C) Club House and Grounds Update.

- 1) We had a good club ground cleanup
- 2) Thanks to Scott S. for mowing , whipping the lawn, cleaning clubhouse and breaking Everything. Mower and weed whip needs to be looked at.
- 3) If anyone has extra wood for the campfire please bring some out.
- 4) Signup sheet for mowing is on the front desk.

IV) Other Old Business

A) None

V) New Business

A) Tony Miller – RAT Stuff

1) He has some old pictures of the Le Suer cleanup project by the river if anyone would like to
Take a look at them.

2) Tony would like to get the 3M River Rats going again before he retires. He may be asking for
Club help for a cleanup project by Cty Rd 5 west of Klossner

The Bockfest Boys
Entertainment Shows
“43 years in the business of music entertainment”
An Upper Midwest original Hotdish of music with crowd engaging originals, ethnic music and popular music from the last 60 years.
Scott Sparlin, agent. P.O. Box 488, New Ulm, MN 56073
507-276-2080 e-mail sesparlin@gmail.com

NEW ULM DECORATING
18248 225th Street
New Ulm, MN 56073
507-359-2850
Kim Olson

Gary Sprenger Construction
Light Carpentry • Drywall Taping & Texturing
Specializing in Drywall Repair
Gary Sprenger, Owner
New Ulm, MN 56073 • Phone 507-359-9358

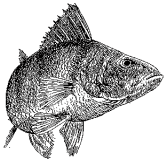
MANKATO TENT & AWNING
www.mankatotent.com
Cell: 507-317-7379 Work: 507-645-5115
E-mail: jesse@mankatotent.com Fax: 507-625-5111
Jesse Spiess, Manager
1021 Range Street • Mankato, MN 56002 • Div. TTF Industries


M & B PRO SHOP
MANKATO
507. 546. 3377
NEW ULM
507. 276 . 6091
218 NORTH PAYNE NEW ULM MN 56073

DIXON LAKE RESORT
Just 5 miles from Lake Winnibigosh's Third River access. Dixon Lake offers clean, cozy cabins with A/C and cable TV. Dixon Lake and Winnie have great fishing: crappies, sunies, walleye, large mouth bass & northern. Bar and Restaurant. Great family resort.
www.dixonlakeresort.com Open year around. ATV trail.
dixonlakeresort@gmail.com Hunting: bear, grouse,
or just give us a call ducks, geese & deer.
1-218-659-1612 Ice fishing and spearing.

Page 3

Fishing & Hunting Outfitters

 **Mr. K** **Mr. O** **Mr. D**
Eric Olson
Lake Diefenbaker
Saskatchewan, Canada



Booking 406-395-4515
Camp 306-773-7877 (June & July)

Eric Olson
Box 23, Havre, MT 59501

NUASF Members. . .
stop in at the B&L BAR for a free bottle of Schell's Original or Grain Belt Premium or Premium Light

B & L BAR
15 North Minnesota Street

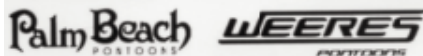
Offer good once a month on the date of the NUASF monthly meeting. Mention this ad for a free beer and always practice safe "drinking".



Lumber • Hardware • Doors • Windows
 Carpet & Flooring • Kitchen & Bath Cabinetry
 Professional Installation • Gas Fireplaces
 Pole Buildings • Paint & Decorating

Hwy 14 West **233-8440** New Ulm

Gabrielle Menne
 Marketing Manager gmenne@pontoon.com
 Direct 507.233.8095



www.palmbeachpontoons.com

www.weeres.com

2137 North Broadway
 New Ulm MN 56073
 800.737.3415 • tel: 507•233•8020
 fax: 507•233•8029



• Solar PV Systems - Design Build Experts
 • Complete Electrical Service - New & Repair
 • Underground Trenching & Aerial Work

800-817-7930

SPRINGFIELD • SLEEPY EYE • MORGAN
 Farm • Commercial • Residential • Industrial

Audio Village

BRING MUSIC TO YOUR LIFE'

• Custom Home Systems • Antenna Systems
 • Surround Sound • Wiring and Hookings

Glen Rasmussen
 Office 354-5961 • Home 354-8745

Matt Sparlin Photography

"A Lifetouch Photographer"

www.facebook.com/matt.sparlinphotography

1-605-323-5700

• • • • •

Matt Sparlin

Experienced Owner/Photographer

mattsparlinphotography@gmail.com

New Ulm, MN 56073 based

Home phone 507-354-1336

Retzlaff's ACE Hardware

Alumacraft Boats

Johnson and Evinrude Outboards

Suzuki Outboards

Shoreland'r Trailers

Boat Accessories and Fishing Tackle

21 N. Minnesota Downtown New Ulm



507-354-8851



PARKING LOT MAINTENANCE

FULLY INSURED

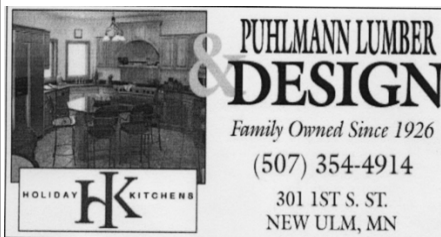
Lot Sweeping • Lot Striping
 Snow Plowing • Construction Clean-up
 Traffic Markings • Skid Load Work
 Traction Control • Catch Basin Cleaning

Jason Kuester

312 4th Street, Courtland, MN 56021

Office 507-354-3973

Cell 507-381-2041



Family Owned Since 1926

(507) 354-4914

301 1ST S. ST.
 NEW ULM, MN



• EMBROIDERY • AD SPECIALTIES

• SCREEN PRINTING • SIGNS

507-354-6009 800-584-9457

1602 S. BROADWAY NEW ULM, MN 56073

This space
 is available
 for your
 advertising message

This space
 is available
 for your
 advertising message

The Official Publication of the New Ulm Area Sport Fishermen
 P.O. Box 294 • New Ulm, Minnesota 56073

